

# RETAIL

## Erdgeschoss

Mögl. Gastrofläche

Fläche **184.8 m<sup>2</sup>**

Mietzins Rohbau **CHF 220/m<sup>2</sup> p.a.**

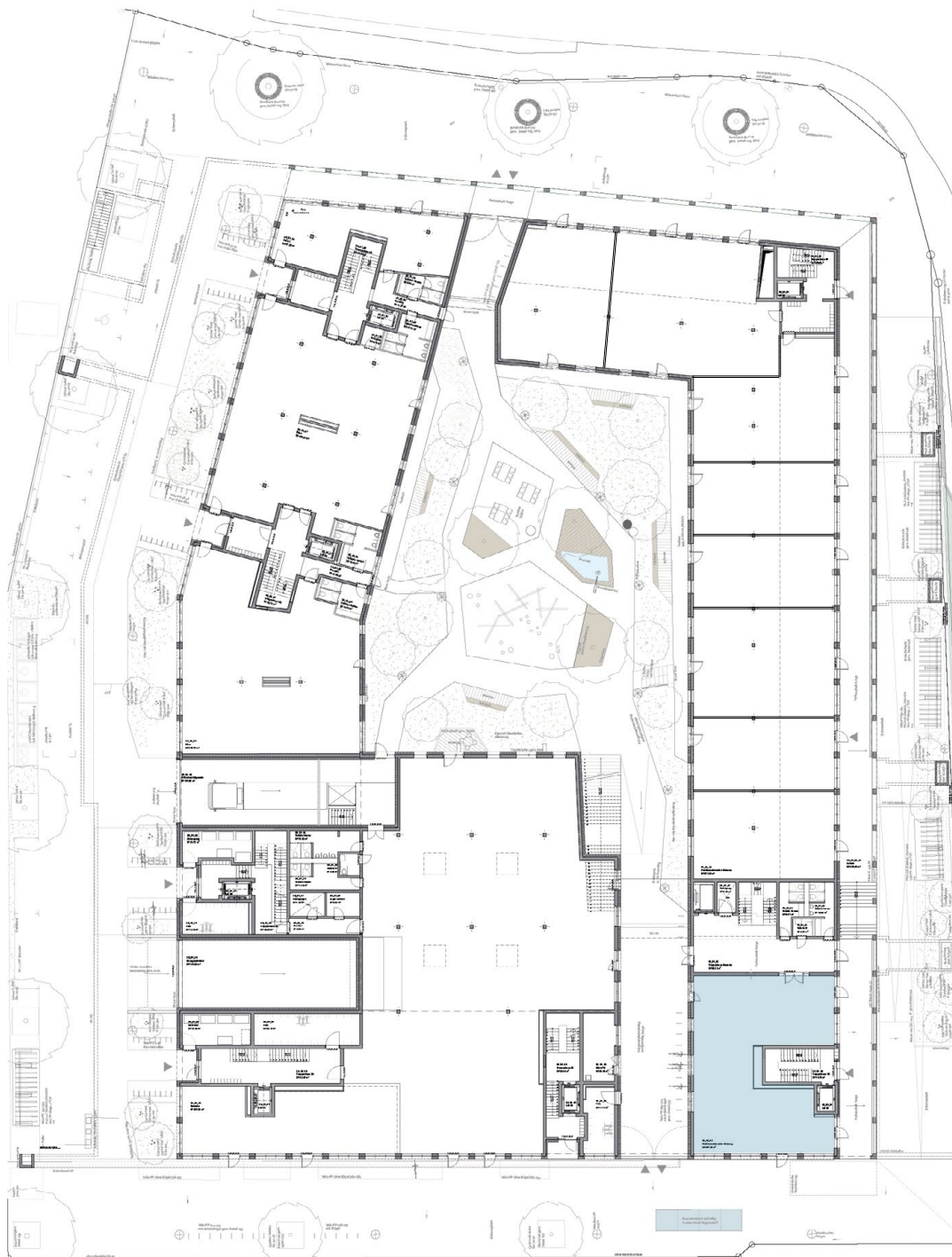
### Kontakt und Vermietung



**Fabian Derungs**  
Director Retail  
Tel.+41 44 250 52 01  
retail@raegipark.ch



**H&B Real Estate AG**  
Lagerstrasse 107  
8004 Zürich



4 m | 8 m | 12 m | 16 m | 20 m